

1. Why do we heat fix the bacteria to the slide before staining?

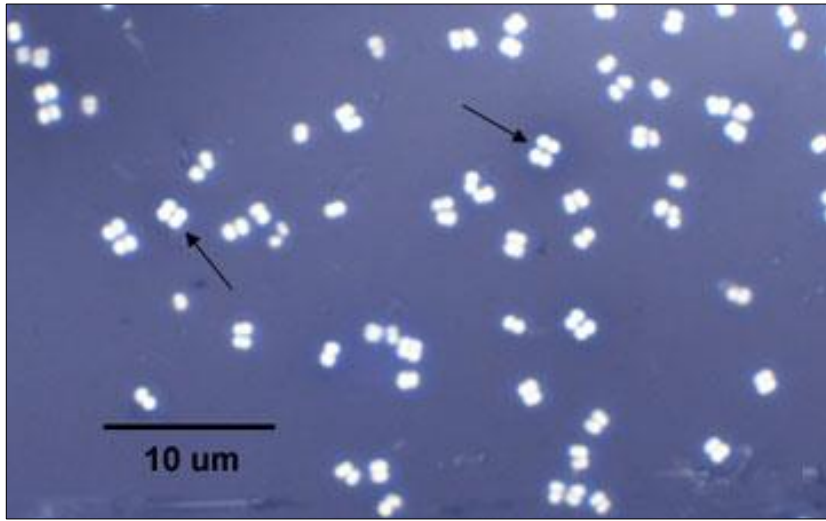
- A. So the bacteria hold the stain better.
- B. So the bacteria don't wash off the slide.
- C. To kill the bacteria.

3. All bacteria have a slight negative charge; a basic dye has the color in the positive ion. Opposite charges attract. This is the principle behind _____.

A. indirect staining.

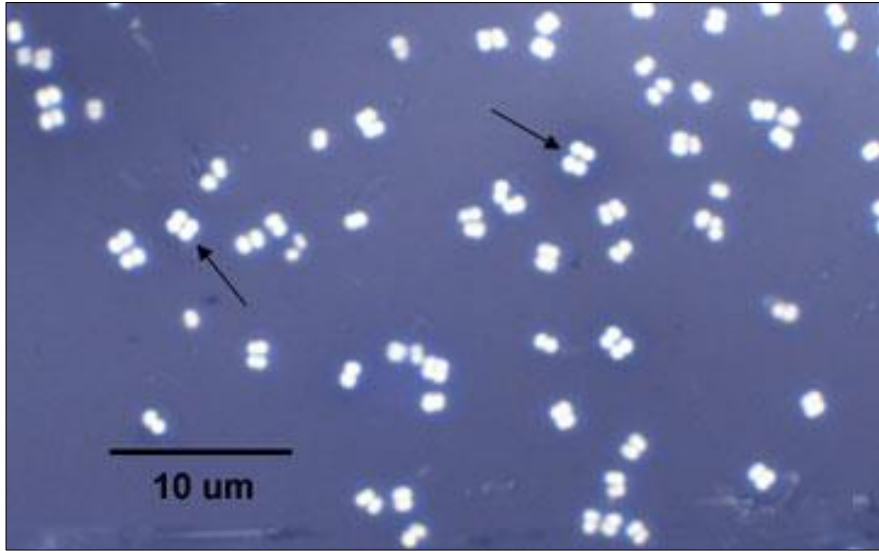
B. why Gram-positive bacteria don't stain pink.

C. direct staining.



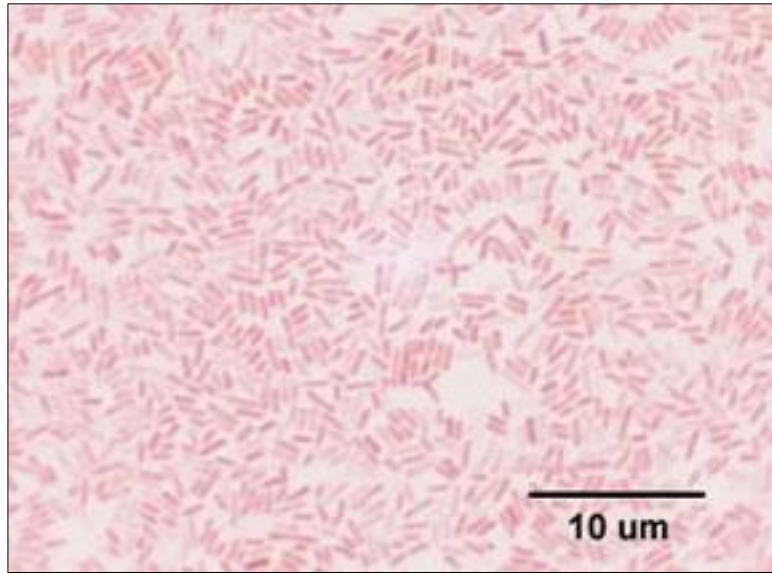
4. Is this a direct stain or an indirect stain?

- A. direct stain
- B. indirect stain



5. What is the arrangement if this bacterium?

- A. staphylococcus
- B. diplococcus
- C. streptococcus
- D. tetrad or sarcina



6. Is this a direct stain or an indirect stain?

- A. direct stain
- B. indirect stain