

1. Thrush, vaginitis, infections of the nails, and dermatitis are caused by _____.

A. *Cryptococcus neoformans*

B. *Pneumocystis jiroveci*

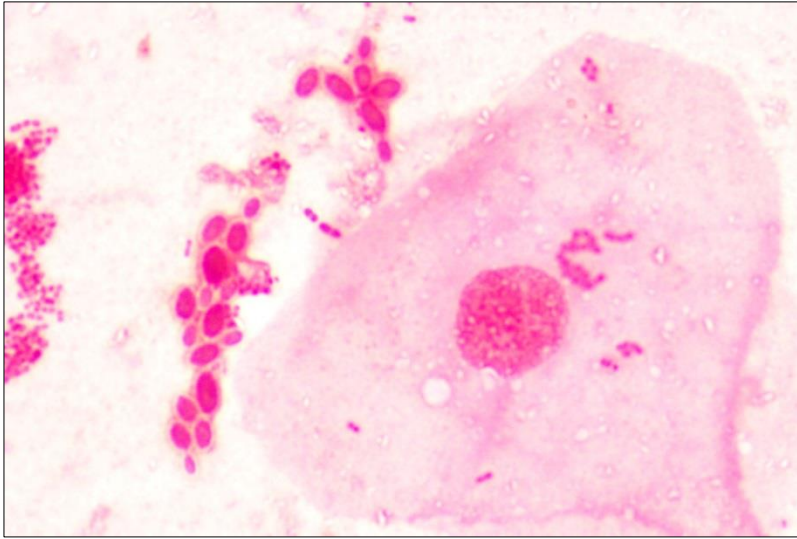
C. *Candida albicans*

2. An often lethal pneumonia called PCP seen in highly immunosuppressed individuals is caused by _____.

A. *Cryptococcus neoformans*

B. *Pneumocystis jiroveci*

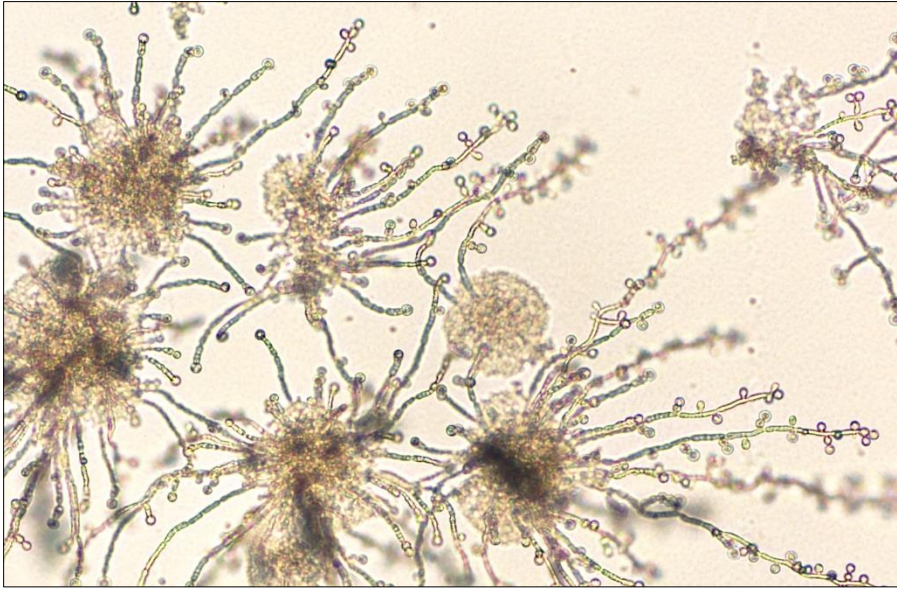
C. *Candida albicans*



3. This is a mouth smear.
The person most likely has

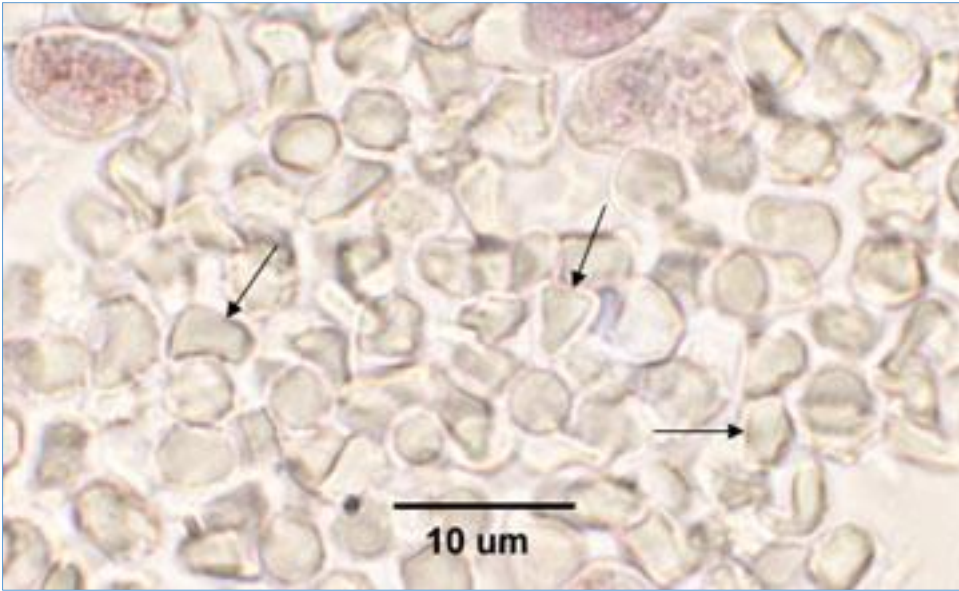
_____.

- A. thrush
- B. cryptococcosis
- C. PCP
- D. onchomycosis



4. This is rice extract agar.
What organism is this?

- A. *Cryptococcus neoformans*
- B. *Pneumocystis jiroveci*
- C. *Candida albicans*



5. What organism is seen in this smear from the lungs?

- A. *Cryptococcus neoformans*
- B. *Pneumocystis jiroveci*
- C. *Candida albicans*



6. This is spinal fluid mixed with India ink. What organism is seen here?

- A. *Cryptococcus neoformans*
- B. *Pneumocystis jiroveci*
- C. *Candida albicans*